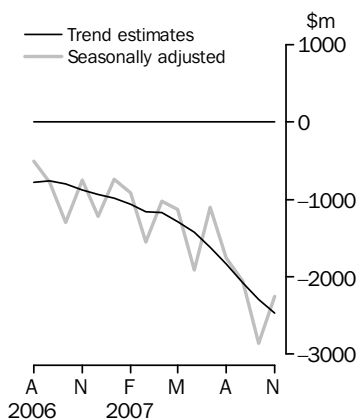


INTERNATIONAL TRADE IN GOODS AND SERVICES

AUSTRALIA

EMBARGO: 11.30AM (CANBERRA TIME) THURS 10 JAN 2008

Balance on Goods and Services



KEY FIGURES

	September 2007	October 2007	November 2007	Oct 07 to Nov 07
	\$m	\$m	\$m	% change
TREND ESTIMATES				
Balance on goods and services	-2 073	-2 297	-2 470	..
Credits (exports of goods & services)	18 006	17 960	17 932	—
Debits (imports of goods & services)	20 079	20 257	20 402	1
SEASONALLY ADJUSTED				
Balance on goods and services	-2 057	-2 863	-2 254	..
Credits (exports of goods & services)	17 779	17 401	18 379	6
Debits (imports of goods & services)	19 836	20 264	20 634	2

.. not applicable

— nil or rounded to zero (including null cells)

KEY POINTS

TREND ESTIMATES

- The provisional trend estimate of the balance on goods and services was a deficit of \$2,470m in November 2007, an increase of \$173m on the revised deficit in October.
- Goods and services credits fell \$28m to \$17,932m. Goods and services debits rose \$145m (1%) to \$20,402m.

SEASONALLY ADJUSTED ESTIMATES

- In seasonally adjusted terms, the balance on goods and services was a deficit of \$2,254m in November, a decrease of \$609m on the revised deficit in October.
- Goods and services credits rose \$978m (6%) to \$18,379m. Non-rural and other goods rose \$892m (8%) and rural goods rose \$100m (5%). Services credits fell \$14m.
- Goods and services debits rose \$370m (2%) to \$20,634m. Capital goods rose \$222m (6%) and consumption goods rose \$179m (4%) while intermediate and other goods fell \$79m (1%). Services debits rose \$47m (1%).

ORIGINAL ESTIMATES

- In original terms, the November 2007 balance on goods and services was a deficit of \$3,349m, a decrease of \$547m on the revised deficit in October. Goods and services credits rose \$295m (2%) and goods and services debits fell \$252m (1%).
- In the five months to November, exports of non-rural and other goods were up \$705m (1%) while rural goods were down \$1,473m (13%) on the corresponding period in 2006–07.

INQUIRIES

For further information about these and related statistics, contact the National Information and Referral Service on 1300 135 070 or Selvi Sekhar on Canberra (02) 6252 5540.

NOTES

FORTHCOMING ISSUES

ISSUE	RELEASE DATE
December 2007	4 February 2008
January 2008	6 March 2008
February 2008	7 April 2008
March 2008	6 May 2008
April 2008	5 June 2008
May 2008	3 July 2008

REVISIONS

Revisions were made to incorporate the latest available data relating to merchandise trade, and survey and administrative data relating to international trade in services. In original terms, these revisions have:

- decreased the deficit on goods and services for October 2007 by \$96m
- increased the deficit on good and services for 2006–07 by \$20m
- decreased the deficit on good and services for 2005–06 by \$88m.

INFORMATION PAPER

An information paper *Changes to international trade statistics July 2008* (cat. no. 5368.0.55.009) is being released concurrently with this issue. The paper outlines changes to classifications associated with international trade statistics. The United Nations has issued an update to the Standard International Trade Classification (SITC) which the ABS will implement from the July 2008 reference month. SITC is the United Nations' recommended classification for presenting merchandise trade statistics and is the underlying classification scheme for balance of payments goods statistics. As a consequence of the changes to SITC, a number of related international trade classifications will be impacted. This information paper can be accessed on the ABS web site www.abs.gov.au.

ABBREVIATIONS

\$b	billion (thousand million) dollars
\$m	million dollars
ABS	Australian Bureau of Statistics
APEC	Asia Pacific Economic Co-operation
ASEAN	Association of South-East Asian Nations
n.e.s.	not elsewhere specified
n.i.e.	not included elsewhere
OECD	Organisation for Economic Co-operation and Development
SAR	Special Administrative Region
SITC	Standard International Trade Classification

Brian Pink
Australian Statistician

CONTENTS

page

Time series data 4

ANALYSIS

Analysis and comments 5

TABLES

INTERNATIONAL TRADE IN GOODS AND SERVICES – BALANCE OF PAYMENTS BASIS

1	Goods and services, summary, seasonally adjusted and trend estimates	9
2	Goods and services, summary, original	10
3	Goods credits, original	11
4	Goods debits, original	12
5	Goods credits, seasonally adjusted	13
6	Goods debits, seasonally adjusted	14
7	Goods credits, trend estimates	15
8	Goods debits, trend estimates	16
9	Services, summary, original	17
10	Services, summary, seasonally adjusted and trend estimates	18
11	Services, original, quarterly	19

INTERNATIONAL MERCHANDISE TRADE – RECORDED TRADE BASIS

12	International merchandise exports, by commodity	20
13	International merchandise imports, by commodity	23
14	International merchandise trade, by country and country groups	26
15	International merchandise trade, by state	27

OTHER TABLES

16	Period average exchange rates per Australian dollar	28
-----------	---	----

OTHER INFORMATION

Explanatory Notes	29
Appendix - Related articles	33

TIME SERIES DATA

TIME SERIES DATA

Data available free on the ABS web site <<http://www.abs.gov.au>> include longer time series of tables in this publication and additional spreadsheets and data cubes below:

31 Merchandise exports by Broad Economic Category (BEC)

32 Merchandise exports by industry of origin (ANZSIC)

33 Merchandise imports by Broad Economic Category (BEC)

34 Merchandise imports by Balance of Payments Broad Economic Category (BoPBEC)

35 Merchandise imports by industry of origin (ANZSIC)

36 Merchandise exports, state by country and country groups

37 Merchandise imports, state by country and country groups

91 Monthly seasonal adjustment factors and forward factors for 12 months.

Trade in Services data cubes are usually updated on an annual basis - with the March issue of 5368.0 for calendar year and with the September issue for financial year.

Financial year (cat. no. 5368.0.55.003)

1 International trade in services, credits, state by financial year

2 International trade in services, credits, financial year by state

3 International trade in services, debits, state by financial year

4 International trade in services, debits, financial year by state

5 International trade in services, credits, financial year by country and service

6 International trade in services, credits, service by financial year and by country

7 International trade in services, debits, financial year by country and service

8 International trade in services, debits, service by financial year and by country

9 International trade in services, financial year by detailed service

Calendar year (cat. no. 5368.0.55.004)

1 International trade in services, credits, state by calendar year

2 International trade in services, credits, calendar year by state

3 International trade in services, debits, state by calendar year

4 International trade in services, debits, calendar year by state

5 International trade in services, credits, calendar year by country and service

6 International trade in services, credits, service by calendar year and by country

7 International trade in services, debits, calendar year by country and service

8 International trade in services, debits, service by calendar year and by country

9 International trade in services, calendar year by detailed service

ANALYSIS AND COMMENTS

BALANCE ON GOODS AND SERVICES

The trend estimate of the balance on goods and services in November 2007 was a deficit of \$2,470m, an increase of \$173m on the deficit in October.

In seasonally adjusted terms, the balance on goods and services in November 2007 was a deficit of \$2,254m, a decrease of \$609m on the deficit in October.

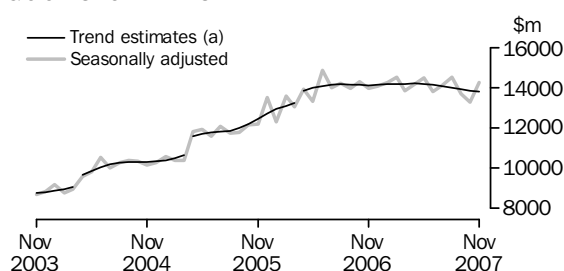
EXPORTS OF GOODS AND SERVICES

The trend estimate of goods and services credits fell \$28m between October and November to \$17,932m.

In seasonally adjusted terms, goods and services credits rose \$978m (6%) to \$18,379m. Non-rural goods rose \$739m (7%), other goods rose \$154m (14%), and rural goods rose \$100m (5%). Services credits fell \$14m.

Exports of goods

GOODS CREDITS



(a) Trend breaks of \$430m to April 2004, \$819m to April 2005 and \$500m to April 2006 have been applied.

RURAL GOODS

The trend estimate of rural goods exports rose \$12m (1%) to \$1,939m.

In seasonally adjusted terms, exports of rural goods rose \$100m (5%) to \$1,977m.

The components contributing to the rise in the seasonally adjusted series were:

- meat and meat preparations, up \$66m (13%)
- wool and sheepskins, up \$31m (13%)
- other rural, up \$14m (2%).

In original terms, exports of rural goods rose \$81m (4%) to \$2,030m.

NON-RURAL GOODS

The trend estimate of non-rural goods exports fell \$49m to \$10,753m.

In seasonally adjusted terms, exports of non-rural goods rose \$739m (7%) to \$11,036m.

The main components contributing to the rise in the seasonally adjusted series were:

- metal ores and minerals, up \$563m (22%)
- metals (excluding non-monetary gold), up \$182m (19%).

Both of these components had a 20% decrease between September and October 2007 before a similar increase between October and November 2007.

Partly offsetting these effects was the other mineral fuels component, down \$122m (8%).

In original terms, exports of non-rural goods rose \$179m (2%) to \$10,909m.

ANALYSIS AND COMMENTS *continued*

Exports of goods *continued*

NON-RURAL GOODS *continued*

Movements in the original series contributing to the rise in seasonally adjusted terms were:

- metal ores and minerals, up \$158m (6%), in contrast to an average October to November fall of 10% over the previous three years, with:
 - non-agglomerated iron ore, up \$96m (7%) with volumes up 10% and prices down 3%
 - copper ore, up \$52m (26%) with volumes up 35% and prices down 6%
 - uranium, up \$29m (45%) with volumes up 26% and prices up 15%.
- metals (excluding non-monetary gold), up \$177m (18%), of which:
 - lead, up \$102m (232%) with volumes up 199% and prices up 11%
 - aluminium, up \$90m (25%) with volumes up 28% and prices down 2%.

OTHER GOODS

The trend estimate of other goods exports fell \$10m (1%) to \$1,116m.

In seasonally adjusted terms, exports of other goods rose \$154m (14%) to \$1,246m.

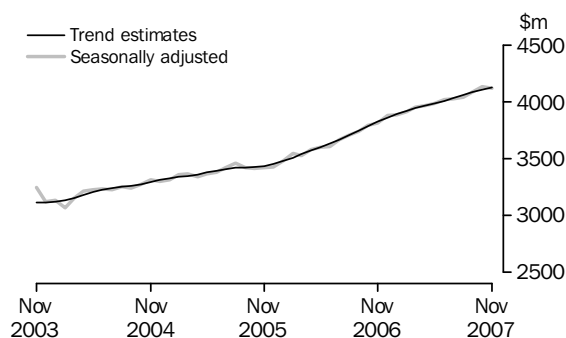
The main components contributing to the rise in the seasonally adjusted series were:

- non-monetary gold, up \$128m (13%)
- goods procured in ports by carriers, up \$20m (18%).

In original terms, exports of other goods rose \$156m (14%) to \$1,249m.

Exports of Services

SERVICES CREDITS



In trend terms, services credits rose \$19m to \$4,124m.

Seasonally adjusted, services credits fell \$14m to \$4,120m.

The main components contributing to the fall in the seasonally adjusted series were:

- transportation services, down \$13m (2%)
- travel services, down \$7m.

Partly offsetting these effects was the other services component, up \$5m.

Seasonally adjusted, tourism related services credits fell \$20m (1%) to \$2,606m. This series is seasonally adjusted independently to the series that comprise services credits.

ANALYSIS AND COMMENTS *continued*

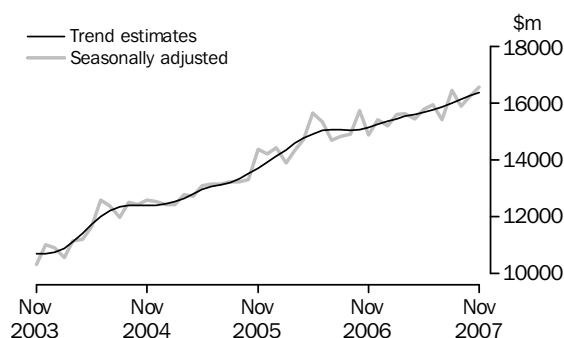
IMPORTS OF GOODS AND SERVICES

The trend estimate of goods and services debits rose \$145m (1%) between October and November to \$20,402m.

In seasonally adjusted terms, goods and services debits rose \$370m (2%) to \$20,634m. Capital goods rose \$222m (6%), consumption goods rose \$179m (4%) and other goods rose \$15m (2%) while intermediate and other merchandise goods fell \$94m (1%). Services debits rose \$47m (1%).

Imports of goods

GOODS DEBITS



CONSUMPTION GOODS

The trend estimate of imports of consumption goods rose \$48m (1%) to \$4,827m.

In seasonally adjusted terms, imports of consumption goods rose \$179m (4%) to \$4,897m.

The main components contributing to the rise in the seasonally adjusted estimates were:

- non-industrial transport equipment, up \$77m (6%)
- food and beverages, mainly for consumption, up \$54m (9%)
- toys, books and leisure goods, up \$25m (7%).

In original terms, imports of consumption goods fell \$52m (1%) to \$5,512m.

CAPITAL GOODS

The trend estimate of imports of capital goods rose \$7m to \$3,612m.

In seasonally adjusted terms, imports of capital goods rose \$222m (6%) to \$3,698m.

The main components contributing to the rise in the seasonally adjusted estimates were:

- machinery and industrial equipment, up \$148m (13%)
- industrial transport equipment n.e.s., up \$85m (15%)
- ADP equipment, up \$35m (6%).

Partly offsetting these effects were:

- civil aircraft, down \$37m
- telecommunications equipment, down \$21m (4%).

In original terms, imports of capital goods rose \$395m (11%) to \$4,085m.

ANALYSIS AND COMMENTS *continued*

Imports of goods continued

INTERMEDIATE AND OTHER MERCHANDISE GOODS

The trend estimate of imports of intermediate and other merchandise goods rose \$54m (1%) to \$7,158m.

In seasonally adjusted terms, imports of intermediate and other merchandise goods fell \$94m (1%) to \$7,170m.

The main components contributing to the fall in the seasonally adjusted estimates were:

- fuels and lubricants, down \$59m (3%)
- primary industrial supplies n.e.s., down \$42m (28%)
- food and beverages, mainly for industry, down \$17m (20%).

Partly offsetting these effects were:

- parts for transport equipment, up \$38m (5%)
- iron and steel, up \$15m (5%).

In original terms, imports of intermediate and other merchandise goods fell \$386m (5%) to \$7,305m.

OTHER GOODS

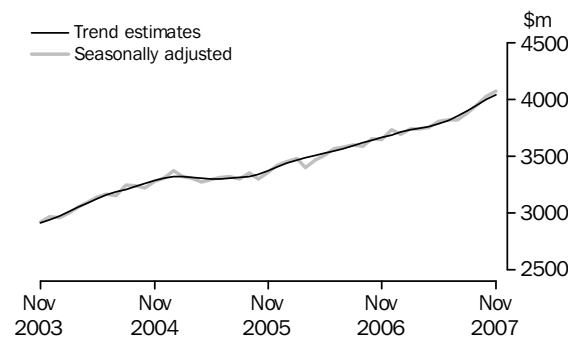
The trend estimate of imports of other goods fell \$6m (1%) to \$766m.

In both original and seasonally adjusted terms, other goods debits rose \$15m (2%) to \$795m.

The main component contributing to the rise in both original and seasonally adjusted estimates was goods for processing, up \$24m to \$25m, partly offset by non-monetary gold, down \$8m (1%).

Imports of services

SERVICES DEBITS



In trend terms, services debits rose \$42m (1%) to \$4,039m.

Seasonally adjusted, services debits rose \$47m (1%) to \$4,073m.

All components contributed to the rise in the seasonally adjusted estimates with:

- travel services, up \$34m (2%)
- other services, up \$11m (1%)
- transportation services, up \$2m.

Seasonally adjusted, tourism related services debits rose \$9m to \$2,071m. This series is seasonally adjusted independently to the series that comprise services debits.

GOODS AND SERVICES(a), Summary: Seasonally Adjusted and Trend Estimates

Months	BALANCE	CREDITS					DEBITS					
	On goods and services	Total goods and services	Total goods	Rural goods(b)	Non-rural and other goods(b)	Total services	Total goods and services	Total goods	Consumption goods	Capital goods	Intermediate and other goods	Total services
	\$m	\$m	\$m	\$m	\$m	\$m	\$m	\$m	\$m	\$m	\$m	\$m
SEASONALLY ADJUSTED												
2006												
September	-779	17 705	13 967	2 204	11 763	3 737	-18 484	-14 896	-4 428	-3 293	-7 175	-3 588
October	-1 299	18 082	14 288	2 213	12 075	3 794	-19 381	-15 729	-4 677	-3 534	-7 517	-3 653
November	-754	17 782	13 969	2 201	11 768	3 814	-18 536	-14 890	-4 561	-3 305	-7 024	-3 646
December	-1 214	17 930	14 054	2 095	11 959	3 876	-19 144	-15 409	-4 604	-3 654	-7 150	-3 735
2007												
January	-739	18 141	14 252	2 046	12 207	3 888	-18 880	-15 186	-4 641	-3 482	-7 063	-3 694
February	-913	18 412	14 502	2 078	12 424	3 910	-19 325	-15 589	-4 869	-3 528	-7 191	-3 737
March	-1 551	17 801	13 850	2 036	11 814	3 951	-19 352	-15 613	-4 623	-3 465	-7 526	-3 739
April	-1 022	18 164	14 197	1 967	12 230	3 967	-19 186	-15 435	-4 717	-3 326	-7 392	-3 751
May	-1 129	18 456	14 469	1 953	12 516	3 986	-19 584	-15 778	-4 592	-3 719	-7 466	-3 807
June	-1 916	17 835	13 819	1 839	11 980	4 016	-19 751	-15 932	-4 580	-3 574	-7 778	-3 818
July	-1 096	18 133	14 109	1 935	12 174	4 024	-19 229	-15 412	-4 583	-3 257	-7 572	-3 817
August	-1 751	18 571	14 532	1 866	12 665	4 039	-20 322	-16 440	-4 732	-3 688	-8 019	-3 882
September	-2 057	17 779	13 694	1 981	11 713	4 085	-19 836	-15 889	-4 777	-3 673	-7 440	-3 947
October	-2 863	17 401	13 267	1 877	11 390	4 134	-20 264	-16 238	-4 718	-3 476	-8 044	-4 026
November	-2 254	18 379	14 259	1 977	12 282	4 120	-20 634	-16 560	-4 897	-3 698	-7 965	-4 073
TREND ESTIMATES												
2006												
September	-755	17 901	14 156	2 222	11 935	3 745	-18 656	-15 039	-4 507	-3 338	-7 194	-3 617
October	-796	17 918	14 133	2 203	11 929	3 785	-18 714	-15 071	-4 549	-3 402	-7 120	-3 643
November	-873	17 944	14 119	2 169	11 950	3 824	-18 817	-15 150	-4 601	-3 455	-7 094	-3 667
December	-940	17 997	14 138	2 129	12 009	3 859	-18 938	-15 248	-4 651	-3 489	-7 108	-3 690
2007												
January	-988	18 072	14 182	2 088	12 093	3 891	-19 061	-15 349	-4 687	-3 508	-7 154	-3 711
February	-1 062	18 111	14 192	2 049	12 142	3 919	-19 173	-15 443	-4 699	-3 507	-7 237	-3 730
March	-1 156	18 140	14 195	2 008	12 187	3 944	-19 296	-15 550	-4 686	-3 499	-7 364	-3 746
April	-1 174	18 171	14 205	1 970	12 235	3 966	-19 344	-15 582	-4 662	-3 496	-7 424	-3 763
May	-1 285	18 179	14 192	1 937	12 256	3 987	-19 464	-15 681	-4 638	-3 501	-7 543	-3 783
June	-1 427	18 154	14 145	1 914	12 231	4 009	-19 580	-15 768	-4 627	-3 514	-7 627	-3 812
July	-1 615	18 112	14 080	1 904	12 176	4 032	-19 727	-15 876	-4 644	-3 536	-7 696	-3 852
August	-1 836	18 061	14 004	1 907	12 097	4 057	-19 898	-15 999	-4 685	-3 558	-7 756	-3 898
September	-2 073	18 006	13 924	1 916	12 008	4 082	-20 079	-16 131	-4 733	-3 581	-7 817	-3 948
October	-2 297	17 960	13 855	1 927	11 928	4 105	-20 257	-16 260	-4 779	-3 605	-7 876	-3 997
November	-2 470	17 932	13 808	1 939	11 869	4 124	-20 402	-16 363	-4 827	-3 612	-7 923	-4 039

(a) For sign conventions, see paragraph 11 of the Explanatory Notes.

(b) For all time periods, estimates for sugar, sugar preparations and honey are included in Non-rural and other goods.

GOODS AND SERVICES(a), Summary: Original

	BALANCE	CREDITS					DEBITS					
	On goods and services	Total goods and services	Total goods	Rural goods(b)	Non-rural and other goods(b)	Total services	Total goods and services	Total goods	Con- sumption goods	Capital goods	Inter- mediate and other goods	Total services
FINANCIAL YEAR												
2004-05	-22 626	167 562	127 867	25 687	102 180	39 695	-190 188	-150 873	-47 143	-35 967	-67 763	-39 315
2005-06	-14 432	196 274	154 425	25 312	129 113	41 849	-210 706	-169 716	-50 322	-39 996	-79 398	-40 990
2006-07	-12 030	215 787	169 517	25 115	144 402	46 270	-227 817	-183 502	-54 997	-41 171	-87 334	-44 315
MONTHS												
2006												
September	-1 477	17 756	14 151	2 266	11 885	3 605	-19 233	-15 336	-4 810	-3 318	-7 208	-3 897
October	-1 782	18 701	14 760	2 277	12 483	3 941	-20 483	-16 666	-5 276	-3 654	-7 736	-3 817
November	-1 558	17 861	13 999	2 213	11 786	3 862	-19 419	-15 881	-5 143	-3 626	-7 112	-3 538
December	-89	18 687	14 799	2 201	12 598	3 888	-18 776	-14 816	-4 351	-3 658	-6 807	-3 960
2007												
January	-2 030	16 559	12 723	1 651	11 072	3 836	-18 589	-14 717	-4 371	-3 229	-7 117	-3 872
February	-231	17 330	13 351	1 978	11 373	3 979	-17 561	-14 281	-4 387	-3 026	-6 868	-3 280
March	-1 019	18 144	14 035	2 155	11 880	4 109	-19 163	-15 539	-4 413	-3 449	-7 677	-3 624
April	-459	18 010	13 976	1 928	12 048	4 034	-18 469	-14 818	-4 329	-3 223	-7 266	-3 651
May	-815	18 648	14 830	2 084	12 746	3 818	-19 463	-15 845	-4 415	-3 822	-7 608	-3 618
June	-1 903	17 680	13 970	1 896	12 074	3 710	-19 583	-15 702	-4 343	-3 745	-7 614	-3 881
July	-869	18 537	14 466	1 897	12 569	4 071	-19 406	-15 482	-4 643	-3 255	-7 584	-3 924
August	-2 032	18 921	14 830	1 865	12 965	4 091	-20 953	-17 103	-5 068	-3 779	-8 256	-3 850
September	-2 234	17 769	13 809	2 008	11 801	3 960	-20 003	-15 807	-4 954	-3 581	-7 272	-4 196
October	-3 896	18 054	13 772	1 949	11 823	4 282	-21 950	-17 725	-5 564	-3 690	-8 471	-4 225
November	-3 349	18 349	14 188	2 030	12 158	4 161	-21 698	-17 697	-5 512	-4 085	-8 100	-4 001
FINANCIAL YEAR TO DATE												
5 months ended												
November												
2006	-5 484	90 729	71 833	11 222	60 611	18 896	-96 213	-77 784	-24 388	-17 019	-36 377	-18 429
2007	-12 380	91 630	71 065	9 749	61 316	20 565	-104 010	-83 814	-25 741	-18 390	-39 683	-20 196

(a) For sign conventions, see paragraph 11 of the Explanatory Notes.

(b) For all time periods, estimates for sugar, sugar preparations and honey are included in Non-rural and other goods.

GOODS CREDITS: Original

							5 MONTHS ENDED		Change
							NOVEMBER		
	2004-05	2005-06	2006-07	Sep 2007	Oct 2007	Nov 2007	2006	2007	
	\$m	\$m	\$m	\$m	\$m	\$m	\$m	%	
Total goods credits	127 867	154 425	169 517	13 809	13 772	14 188	71 833	71 065	-1.1
<i>Rural goods</i>	25 687	25 312	25 115	2 008	1 949	2 030	11 222	9 749	-13.1
Meat and meat preparations	6 937	6 709	7 078	570	539	627	3 162	2 767	-12.5
Cereal grains and cereal preparations	5 159	4 852	4 171	320	223	193	2 138	1 315	-38.5
Wool and sheepskins	2 838	2 544	3 065	226	262	289	1 126	1 116	-0.9
Other rural(a)	10 753	11 207	10 801	892	925	921	4 796	4 551	-5.1
<i>Non-rural goods</i>	94 328	118 164	131 777	10 861	10 730	10 909	55 665	55 617	-0.1
Metal ores and minerals	19 854	28 936	35 314	3 059	2 819	2 977	14 795	15 251	3.1
Coal, coke and briquettes	17 236	24 353	21 928	1 752	1 625	1 609	9 447	8 338	-11.7
Other mineral fuels	11 151	13 220	15 642	1 085	1 568	1 433	6 843	7 056	3.1
Metals (excl. non-monetary gold)	8 668	11 278	14 826	1 160	961	1 138	5 809	5 731	-1.3
Machinery	7 488	8 087	8 437	801	768	751	3 597	3 830	6.5
Transport equipment	4 943	5 316	4 646	464	481	528	1 973	2 399	21.6
Other manufactures	14 043	14 926	16 193	1 503	1 447	1 404	6 916	7 326	5.9
Other non-rural (incl. sugar and beverages)	10 945	12 048	14 791	1 037	1 061	1 069	6 285	5 686	-9.5
<i>Other goods</i>	7 852	10 949	12 625	940	1 093	1 249	4 946	5 699	15.2
Goods for processing	241	368	417	13	19	25	171	99	-42.1
Repairs on goods	67	74	90	9	8	8	34	41	20.6
Goods procured in ports by carriers	1 072	1 420	1 379	113	112	134	602	590	-2.0
Non-monetary gold	6 472	9 087	10 739	805	954	1 082	4 139	4 969	20.1

(a) For all time periods, estimates for sugar, sugar preparations and honey are included in Other non-rural.

GOODS DEBITS(a): Original

							5 MONTHS ENDED		Change
							NOVEMBER		
	2004-05	2005-06	2006-07	Sep 2007	Oct 2007	Nov 2007	2006	2007	
	\$m	\$m	\$m	\$m	\$m	\$m	\$m	%	
Total goods debits	-150 873	-169 716	-183 502	-15 807	-17 725	-17 697	-77 784	-83 814	7.8
<i>Consumption goods</i>	-47 143	-50 322	-54 997	-4 954	-5 564	-5 512	-24 388	-25 741	5.5
Food and beverages, mainly for consumption	-5 767	-6 170	-7 181	-651	-689	-757	-3 091	-3 381	9.4
Household electrical items	-4 024	-4 291	-4 610	-481	-552	-584	-2 244	-2 489	10.9
Non-industrial transport equipment	-13 003	-13 589	-14 889	-1 291	-1 447	-1 511	-6 269	-6 702	6.9
Textiles, clothing and footwear	-5 811	-6 365	-6 806	-587	-623	-588	-3 024	-3 070	1.5
Toys, books and leisure goods	-3 740	-4 055	-4 329	-452	-489	-471	-2 088	-2 141	2.5
Consumption goods n.e.s.	-14 798	-15 852	-17 182	-1 492	-1 764	-1 601	-7 672	-7 958	3.7
<i>Capital goods</i>	-35 967	-39 996	-41 171	-3 581	-3 690	-4 085	-17 019	-18 390	8.1
Machinery and industrial equipment	-13 409	-14 328	-15 306	-1 412	-1 270	-1 504	-6 598	-6 851	3.8
ADP equipment	-5 761	-6 073	-6 847	-538	-537	-578	-2 747	-2 814	2.4
Telecommunications equipment	-4 568	-5 334	-5 333	-495	-641	-667	-2 358	-2 697	14.4
Civil aircraft	-2 496	-2 967	-1 666	-71	-115	-78	-509	-570	12.0
Industrial transport equipment n.e.s.	-4 981	-5 495	-6 431	-571	-594	-707	-2 343	-2 952	26.0
Capital goods n.e.s.	-4 752	-5 799	-5 588	-494	-533	-551	-2 464	-2 506	1.7
<i>Intermediate and other merchandise goods</i>	-63 730	-72 722	-79 912	-6 706	-7 691	-7 305	-33 233	-35 800	7.7
Food and beverages, mainly for industry	-659	-651	-819	-64	-89	-73	-327	-370	13.1
Primary industrial supplies n.e.s.	-1 052	-1 193	-1 555	-116	-169	-98	-640	-635	-0.8
Fuels and lubricants	-14 720	-21 014	-21 474	-2 010	-2 299	-2 240	-8 802	-10 523	19.6
Parts for transport equipment	-7 008	-7 314	-8 354	-684	-757	-788	-3 613	-3 744	3.6
Parts for ADP equipment	-1 787	-1 857	-1 621	-101	-90	-89	-783	-490	-37.4
Other parts for capital goods	-9 485	-10 154	-11 762	-956	-1 069	-1 018	-4 820	-5 088	5.6
Organic and inorganic chemicals	-3 622	-4 134	-4 406	-397	-389	-319	-1 877	-1 902	1.3
Paper and paperboard	-2 313	-2 302	-2 372	-204	-225	-198	-1 055	-1 075	1.9
Textile yarn and fabrics	-1 452	-1 361	-1 365	-118	-120	-123	-615	-592	-3.7
Iron and steel	-3 008	-3 239	-3 817	-259	-287	-310	-1 507	-1 510	0.2
Plastics	-2 428	-2 517	-2 957	-259	-280	-284	-1 233	-1 327	7.6
Processed industrial supplies n.e.s.	-15 142	-15 856	-17 791	-1 442	-1 792	-1 648	-7 319	-8 000	9.3
Other merchandise goods	-1 054	-1 130	-1 619	-96	-125	-117	-642	-544	-15.3
<i>Other goods</i>	-4 033	-6 676	-7 422	-566	-780	-795	-3 144	-3 883	23.5
Goods for processing	-243	-445	-507	-1	-1	-25	-228	-35	-84.6
Repairs on goods	-182	-115	-131	-9	-10	-9	-58	-59	1.7
Goods procured in ports by carriers	-1 049	-1 406	-1 468	-123	-132	-132	-672	-639	-4.9
Non-monetary gold	-2 559	-4 710	-5 316	-433	-637	-629	-2 186	-3 150	44.1

(a) For sign conventions, see paragraph 11 of the Explanatory Notes.

GOODS CREDITS: Seasonally Adjusted

	Feb 2007	Mar 2007	Apr 2007	May 2007	Jun 2007	Jul 2007	Aug 2007	Sep 2007	Oct 2007	Nov 2007
	\$m	\$m	\$m	\$m	\$m	\$m	\$m	\$m	\$m	\$m
Total goods credits	14 502	13 850	14 197	14 469	13 819	14 109	14 532	13 694	13 267	14 259
<i>Rural goods</i>	2 078	2 036	1 967	1 953	1 839	1 935	1 866	1 981	1 877	1 977
Meat and meat preparations	613	584	550	526	509	523	535	546	505	571
Cereal grains and cereal preparations	293	279	289	285	220	370	230	313	239	229
Wool and sheepskins	277	271	266	268	264	222	217	227	240	271
Other rural(a)	895	902	863	874	846	820	884	895	893	907
<i>Non-rural goods</i>	11 306	10 823	11 172	11 304	10 689	11 014	11 415	10 778	10 297	11 036
Metal ores and minerals	3 126	2 634	2 997	3 084	2 910	3 155	3 188	3 193	2 552	3 115
Coal, coke and briquettes(b)	1 740	1 813	1 785	1 760	1 667	1 558	1 733	1 778	1 596	1 632
Other mineral fuels	1 309	1 290	1 409	1 263	1 319	1 148	1 568	1 018	1 550	1 428
Metals (excl. non-monetary gold)	1 338	1 305	1 309	1 341	1 072	1 269	1 175	1 216	975	1 157
Machinery	693	719	736	730	723	723	718	761	741	740
Transport equipment	412	381	386	435	386	475	441	454	444	482
Other manufactures	1 396	1 475	1 257	1 388	1 363	1 415	1 435	1 414	1 395	1 382
Other non-rural (incl. sugar and beverages)	1 292	1 207	1 294	1 301	1 249	1 270	1 158	946	1 044	1 100
<i>Other goods</i>	1 118	991	1 057	1 212	1 291	1 161	1 251	935	1 092	1 246
Goods for processing(c)	28	61	9	55	43	23	19	13	19	25
Repairs on goods(c)	6	10	7	9	12	8	8	9	8	8
Goods procured in ports by carriers	112	113	115	111	111	115	111	108	111	131
Non-monetary gold(c)	972	807	926	1 037	1 125	1 015	1 113	805	954	1 082

(a) For all time periods, estimates for sugar, sugar preparations and honey are included in Other non-rural.

(b) Only a length-of-month effect has been applied to this component.

(c) This component is not seasonally adjusted.

GOODS DEBITS(a): Seasonally Adjusted

	Feb 2007	Mar 2007	Apr 2007	May 2007	Jun 2007	Jul 2007	Aug 2007	Sep 2007	Oct 2007	Nov 2007
	\$m	\$m	\$m	\$m	\$m	\$m	\$m	\$m	\$m	\$m
Total goods debits	-15 589	-15 613	-15 435	-15 778	-15 932	-15 412	-16 440	-15 889	-16 238	-16 560
<i>Consumption goods</i>	-4 869	-4 623	-4 717	-4 592	-4 580	-4 583	-4 732	-4 777	-4 718	-4 897
Food and beverages, mainly for consumption	-673	-636	-597	-601	-561	-630	-669	-648	-588	-642
Household electrical items	-384	-383	-349	-397	-409	-419	-420	-440	-426	-435
Non-industrial transport equipment	-1 285	-1 264	-1 391	-1 173	-1 169	-1 173	-1 277	-1 295	-1 332	-1 409
Textiles, clothing and footwear	-602	-553	-564	-569	-578	-565	-574	-577	-570	-575
Toys, books and leisure goods	-375	-381	-370	-372	-367	-344	-354	-370	-351	-376
Consumption goods n.e.s.	-1 549	-1 405	-1 445	-1 480	-1 496	-1 451	-1 438	-1 445	-1 451	-1 460
<i>Capital goods</i>	-3 528	-3 465	-3 326	-3 719	-3 574	-3 257	-3 688	-3 673	-3 476	-3 698
Machinery and industrial equipment	-1 293	-1 334	-1 301	-1 231	-1 281	-1 263	-1 259	-1 466	-1 180	-1 328
ADP equipment	-647	-590	-566	-564	-552	-553	-593	-568	-541	-576
Telecommunications equipment	-400	-426	-439	-471	-470	-445	-471	-489	-580	-559
Civil aircraft(b)	-57	-14	-35	-414	-258	-10	-296	-71	-115	-78
Industrial transport equipment n.e.s.	-677	-617	-534	-575	-550	-529	-602	-588	-578	-663
Capital goods n.e.s.	-454	-483	-450	-465	-463	-457	-467	-490	-481	-494
<i>Intermediate and other merchandise goods</i>	-6 480	-7 032	-6 799	-6 918	-6 925	-6 723	-7 126	-6 874	-7 264	-7 170
Food and beverages, mainly for industry	-68	-68	-70	-69	-70	-69	-70	-63	-87	-70
Primary industrial supplies n.e.s.(c)	-144	-149	-150	-96	-124	-146	-106	-114	-152	-110
Fuels and lubricants(b)	-1 512	-1 877	-1 782	-2 072	-2 029	-1 812	-2 162	-2 010	-2 299	-2 240
Parts for transport equipment	-715	-724	-704	-680	-700	-689	-767	-704	-691	-729
Parts for ADP equipment	-110	-117	-111	-117	-103	-101	-103	-98	-91	-92
Other parts for capital goods	-1 008	-1 044	-1 039	-1 018	-983	-979	-990	-973	-990	-973
Organic and inorganic chemicals(c)	-379	-371	-367	-346	-316	-404	-404	-422	-384	-375
Paper and paperboard	-205	-197	-205	-210	-192	-212	-208	-197	-194	-181
Textile yarn and fabrics	-114	-112	-119	-107	-109	-106	-107	-119	-113	-113
Iron and steel	-325	-355	-331	-313	-330	-331	-300	-295	-284	-299
Plastics	-249	-256	-249	-259	-252	-251	-257	-262	-258	-260
Processed industrial supplies n.e.s.	-1 569	-1 481	-1 590	-1 523	-1 536	-1 535	-1 533	-1 521	-1 598	-1 612
Other merchandise goods(b)	-83	-280	-82	-108	-182	-87	-119	-96	-125	-117
<i>Other goods</i>	-711	-494	-593	-548	-853	-849	-893	-566	-780	-795
Goods for processing(b)	-29	-112	-1	-1	-5	-1	-7	-1	-1	-25
Repairs on goods(b)	-17	-11	-8	-10	-10	-14	-17	-9	-10	-9
Goods procured in ports by carriers(b)	-110	-109	-116	-116	-115	-126	-126	-123	-132	-132
Non-monetary gold(d)	-555	-262	-468	-421	-723	-708	-743	-433	-637	-629

(a) For sign conventions, see paragraph 11 of the Explanatory Notes.

(b) These components are not seasonally adjusted.

(c) In using these seasonally adjusted series, care should be exercised because of the difficulties associated with reliably estimating the seasonal pattern.

(d) From October 1995, this component is not seasonally adjusted.

	Feb 2007	Mar 2007	Apr 2007	May 2007	Jun 2007	Jul 2007	Aug 2007	Sep 2007	Oct 2007	Nov 2007
	\$m	\$m	\$m	\$m	\$m	\$m	\$m	\$m	\$m	\$m
Total goods credits	14 192	14 195	14 205	14 192	14 145	14 080	14 004	13 924	13 855	13 808
<i>Rural goods</i>	2 049	2 008	1 970	1 937	1 914	1 904	1 907	1 916	1 927	1 939
Meat and meat preparations	604	581	557	537	525	523	527	532	538	544
Cereal grains and cereal preparations	286	278	277	280	283	282	278	270	260	250
Wool and sheepskins	270	272	269	259	248	239	234	234	238	243
Other rural(a)	889	877	867	860	858	860	868	880	892	902
<i>Non-rural goods</i>	11 111	11 107	11 104	11 089	11 052	11 002	10 941	10 870	10 802	10 753
Metal ores and minerals	2 938	2 927	2 952	3 000	3 043	3 066	3 060	3 031	2 992	2 959
Coal, coke and briquettes	1 825	1 799	1 761	1 726	1 699	1 684	1 674	1 666	1 659	1 652
Other mineral fuels	1 305	1 313	1 313	1 305	1 296	1 298	1 313	1 338	1 368	1 406
Metals (excl. non-monetary gold)	1 317	1 313	1 296	1 268	1 233	1 199	1 169	1 141	1 117	1 099
Machinery	706	716	723	726	728	730	733	737	741	744
Transport equipment	382	388	399	412	424	436	446	455	462	467
Other manufactures	1 381	1 379	1 376	1 378	1 384	1 394	1 404	1 409	1 411	1 402
Other non-rural (incl. sugar and beverages)	1 257	1 273	1 284	1 275	1 244	1 196	1 143	1 093	1 052	1 024
<i>Other goods</i>	1 032	1 080	1 131	1 167	1 179	1 174	1 156	1 138	1 126	1 116
Goods for processing	36	38	39	37	34	28	24	20	19	15
Repairs on goods	7	8	9	9	9	9	9	9	8	8
Goods procured in ports by carriers	113	114	113	112	111	111	112	114	116	119
Non-monetary gold	876	921	970	1 008	1 025	1 025	1 012	995	983	974

(a) For all time periods, estimates for sugar, sugar preparations and honey are included in Other non-rural.

GOODS DEBITS(a): Trend Estimates

	Feb 2007	Mar 2007	Apr 2007	May 2007	Jun 2007	Jul 2007	Aug 2007	Sep 2007	Oct 2007	Nov 2007
	\$m	\$m	\$m	\$m	\$m	\$m	\$m	\$m	\$m	\$m
Total goods debits	-15 443	-15 550	-15 582	-15 681	-15 768	-15 876	-15 999	-16 131	-16 260	-16 363
<i>Consumption goods</i>	-4 699	-4 686	-4 662	-4 638	-4 627	-4 644	-4 685	-4 733	-4 779	-4 827
Food and beverages, mainly for consumption	-631	-622	-613	-609	-611	-617	-625	-632	-635	-636
Household electrical items	-373	-373	-379	-390	-402	-414	-423	-430	-435	-436
Non-industrial transport equipment	-1 291	-1 280	-1 259	-1 234	-1 219	-1 225	-1 250	-1 287	-1 325	-1 371
Textiles, clothing and footwear	-571	-570	-569	-569	-570	-571	-573	-574	-574	-574
Toys, books and leisure goods	-373	-374	-373	-368	-363	-359	-358	-359	-361	-364
Consumption goods n.e.s.	-1 461	-1 467	-1 470	-1 467	-1 462	-1 458	-1 456	-1 452	-1 449	-1 447
<i>Capital goods</i>	-3 507	-3 499	-3 496	-3 501	-3 514	-3 536	-3 558	-3 581	-3 605	-3 612
Machinery and industrial equipment	-1 307	-1 294	-1 284	-1 280	-1 279	-1 285	-1 294	-1 302	-1 307	-1 312
ADP equipment	-603	-594	-583	-572	-563	-562	-564	-565	-566	-566
Telecommunications equipment	-432	-434	-439	-445	-456	-471	-489	-510	-531	-551
Civil aircraft	-94	-114	-143	-174	-195	-192	-167	-136	-109	-73
Industrial transport equipment n.e.s.	-606	-601	-587	-569	-557	-560	-573	-589	-607	-621
Capital goods n.e.s.	-464	-462	-461	-461	-463	-466	-472	-478	-485	-490
<i>Intermediate and other merchandise goods</i>	-6 661	-6 751	-6 824	-6 871	-6 901	-6 931	-6 975	-7 037	-7 104	-7 158
Food and beverages, mainly for industry	-68	-69	-69	-69	-69	-70	-71	-72	-73	-74
Primary industrial supplies n.e.s.	-137	-136	-133	-129	-125	-123	-123	-124	-124	-126
Fuels and lubricants	-1 687	-1 760	-1 837	-1 909	-1 970	-2 020	-2 064	-2 119	-2 177	-2 218
Parts for transport equipment	-703	-702	-703	-704	-705	-708	-712	-716	-718	-720
Parts for ADP equipment	-124	-117	-112	-108	-106	-103	-100	-97	-94	-92
Other parts for capital goods	-1 032	-1 035	-1 028	-1 015	-1 000	-990	-983	-979	-977	-976
Organic and inorganic chemicals	-360	-359	-360	-362	-368	-377	-388	-395	-398	-399
Paper and paperboard	-199	-202	-204	-205	-205	-204	-202	-198	-194	-190
Textile yarn and fabrics	-113	-113	-111	-110	-110	-110	-110	-112	-113	-114
Iron and steel	-337	-335	-333	-330	-323	-315	-307	-300	-294	-290
Plastics	-251	-252	-253	-254	-255	-255	-257	-258	-259	-260
Processed industrial supplies n.e.s.	-1 516	-1 532	-1 539	-1 539	-1 536	-1 536	-1 544	-1 556	-1 569	-1 587
Other merchandise goods	-134	-141	-144	-138	-129	-120	-114	-112	-114	-112
<i>Other goods</i>	-576	-613	-600	-672	-726	-764	-781	-780	-772	-766
Goods for processing	-66	-76	-2	-4	-5	-4	-4	-6	-9	-12
Repairs on goods	-11	-11	-11	-11	-12	-12	-12	-12	-11	-10
Goods procured in ports by carriers	-111	-111	-113	-116	-119	-122	-125	-127	-129	-131
Non-monetary gold	-389	-415	-474	-541	-591	-626	-641	-636	-623	-612

(a) For sign conventions, see paragraph 11 of the Explanatory Notes.

SERVICES (a)(b), Summary: Original

							5 MONTHS ENDED		Change
							NOVEMBER		
	2004-05	2005-06	2006-07	Sep 2007	Oct 2007	Nov 2007	2006	2007	
	\$m	\$m	\$m	\$m	\$m	\$m	\$m	%	
Services credits	39 695	41 849	46 270	3 960	4 282	4 161	18 896	20 565	8.8
<i>Transportation services</i>	8 002	8 208	8 617	688	747	749	3 563	3 621	1.6
Freight	704	608	609	52	52	52	269	258	-4.1
Passenger and other	7 298	7 600	8 008	636	695	697	3 294	3 363	2.1
<i>Travel services</i>	21 440	22 624	25 280	2 214	2 355	2 232	10 253	11 403	11.2
<i>Other services</i>	10 253	11 017	12 373	1 058	1 180	1 180	5 080	5 541	9.1
Services debits	-39 315	-40 990	-44 315	-4 196	-4 225	-4 001	-18 429	-20 196	9.6
<i>Transportation services</i>	-13 796	-14 508	-15 368	-1 394	-1 426	-1 397	-6 486	-6 777	4.5
Freight	-7 500	-7 776	-8 044	-673	-787	-762	-3 472	-3 552	2.3
Passenger and other	-6 296	-6 732	-7 324	-721	-639	-635	-3 014	-3 225	7.0
<i>Travel services</i>	-14 507	-15 090	-15 968	-1 662	-1 562	-1 367	-6 708	-7 564	12.8
<i>Other services</i>	-11 012	-11 392	-12 979	-1 140	-1 237	-1 237	-5 235	-5 855	11.8
Memorandum items:									
Tourism related service credits(c)	25 584	26 728	29 517	2 525	2 721	2 600	11 965	13 139	9.8
Tourism related service debits(c)	-20 287	-21 374	-22 844	-2 349	-2 165	-1 821	-9 537	-10 462	9.7

(a) For sign conventions, see paragraph 11 of the Explanatory Notes.
 (b) For more detailed trade in services components, see table 11.

(c) For a more detailed explanation of tourism related services, see paragraphs 18 and 19 of the Explanatory Notes.

	Feb 2007	Mar 2007	Apr 2007	May 2007	Jun 2007	Jul 2007	Aug 2007	Sep 2007	Oct 2007	Nov 2007
	\$m	\$m	\$m	\$m	\$m	\$m	\$m	\$m	\$m	\$m
SEASONALLY ADJUSTED										
Services credits	3 910	3 951	3 967	3 986	4 016	4 024	4 039	4 085	4 134	4 120
Transportation services	734	737	713	705	707	719	710	724	739	726
Freight	49	49	48	47	46	52	51	51	51	51
Passenger and other	685	688	665	658	660	667	659	674	688	675
Travel services	2 147	2 181	2 187	2 207	2 237	2 232	2 246	2 272	2 269	2 262
Other services(b)	1 028	1 033	1 067	1 074	1 071	1 073	1 084	1 088	1 127	1 132
Services debits	-3 737	-3 739	-3 751	-3 807	-3 818	-3 817	-3 882	-3 947	-4 026	-4 073
Transportation services	-1 334	-1 304	-1 244	-1 273	-1 265	-1 266	-1 299	-1 334	-1 349	-1 351
Freight	-670	-675	-672	-668	-662	-664	-675	-697	-698	-684
Passenger and other	-663	-629	-573	-605	-603	-602	-624	-637	-651	-666
Travel services	-1 313	-1 340	-1 366	-1 389	-1 401	-1 413	-1 433	-1 455	-1 492	-1 526
Other services(b)	-1 090	-1 094	-1 140	-1 145	-1 151	-1 139	-1 150	-1 157	-1 186	-1 197
Memorandum items:										
Tourism related service credits(c)	2 506	2 559	2 553	2 556	2 592	2 581	2 586	2 626	2 626	2 606
Tourism related service debits(c)	-1 917	-1 962	-1 940	-1 938	-1 979	-1 965	-2 013	-2 035	-2 062	-2 071

TREND ESTIMATES										
Services credits	3 919	3 944	3 966	3 987	4 009	4 032	4 057	4 082	4 105	4 124
Transportation services	730	725	719	714	712	713	718	723	727	731
Freight	49	48	48	48	49	50	50	51	51	52
Passenger and other	681	677	671	666	663	664	667	672	676	680
Travel services	2 155	2 175	2 193	2 210	2 226	2 239	2 250	2 259	2 267	2 271
Other services	1 034	1 044	1 054	1 063	1 072	1 080	1 089	1 100	1 111	1 122
Services debits	-3 730	-3 746	-3 763	-3 783	-3 812	-3 852	-3 898	-3 948	-3 997	-4 039
Transportation services	-1 302	-1 290	-1 277	-1 269	-1 271	-1 283	-1 301	-1 320	-1 337	-1 351
Freight	-673	-670	-667	-667	-669	-673	-678	-684	-689	-694
Passenger and other	-629	-620	-610	-602	-602	-610	-622	-636	-648	-657
Travel services	-1 333	-1 346	-1 362	-1 379	-1 398	-1 419	-1 440	-1 463	-1 485	-1 504
Other services	-1 095	-1 110	-1 124	-1 135	-1 143	-1 150	-1 157	-1 166	-1 175	-1 184
Memorandum items:										
Tourism related service credits(c)	2 519	2 539	2 555	2 568	2 579	2 589	2 599	2 608	2 616	2 621
Tourism related service debits(c)	-1 930	-1 936	-1 943	-1 952	-1 968	-1 987	-2 008	-2 031	-2 051	-2 068

(a) For sign conventions, see paragraph 11 of the Explanatory Notes.

(b) In using these seasonally adjusted series, care should be exercised because of the difficulties associated with reliably estimating the seasonal pattern.

(c) For a more detailed explanation of tourism related services, see paragraphs 18 and 19 of the Explanatory Notes.

	CREDITS				DEBITS			
	Dec Qtr	Mar Qtr	Jun Qtr	Sep Qtr	Dec Qtr	Mar Qtr	Jun Qtr	Sep Qtr
	2006	2007	2007	2007	2006	2007	2007	2007
	\$m	\$m	\$m	\$m	\$m	\$m	\$m	\$m
Services	11 691	11 924	11 562	12 122	-11 315	-10 776	-11 150	-11 970
Transportation services	2 257	2 280	1 989	2 125	-4 044	-3 761	-3 709	-3 954
Passenger(c)	2 094	2 139	1 845	1 971	-1 661	-1 575	-1 604	-1 758
Freight	163	141	144	154	-2 176	-1 986	-1 916	-2 003
Other(c)	np	np	np	np	-207	-200	-189	-193
Travel services	6 250	6 662	6 328	6 816	-3 958	-3 797	-4 032	-4 635
Business	591	635	619	657	-613	-697	-664	-675
Personal	5 659	6 027	5 709	6 159	-3 345	-3 100	-3 368	-3 960
Education-related	2 480	2 833	3 139	3 495	-166	-172	-177	-260
Other	3 179	3 194	2 570	2 664	-3 179	-2 928	-3 191	-3 700
Communication services(d)	194	190	168	169	-203	-185	-214	-187
Construction services	34	36	33	30	—	—	—	—
Insurance services	176	176	176	181	-225	-225	-225	-233
Financial services	251	251	251	259	-150	-150	-150	-155
Computer and information services	419	336	368	384	-375	-341	-382	-343
Royalties and license fees	221	216	244	184	-838	-790	-826	-872
Other business services	1 534	1 403	1 636	1 629	-1 040	-984	-1 111	-1 131
Merchanting and other trade-related	192	193	211	183	-55	-52	-50	-57
Operational leasing	10	10	13	14	-230	-208	-199	-220
Miscellaneous business, professional and technical	1 332	1 200	1 412	1 432	-755	-724	-862	-854
Legal, accounting, management consulting and public relations	214	214	269	308	-104	-96	-174	-113
Advertising, market research and public opinion polling	57	60	66	61	-36	-40	-53	-34
Research and development	141	118	133	146	-37	-28	-25	-31
Architectural, engineering and other technical services	349	335	374	354	-124	-141	-147	-201
Agriculture, mining and on-site processing	86	88	92	95	-45	-56	-94	-83
Services between affiliated enterprises n.i.e.	356	263	331	322	-272	-204	-218	-222
Other	129	122	147	146	-137	-159	-151	-170
Personal, cultural, and recreational services	154	158	152	131	-269	-340	-261	-268
Audiovisual and related services	38	51	43	33	-224	-266	-236	-244
Personal, cultural and recreational services	116	107	109	98	-45	-74	-25	-24
Government services n.i.e.	201	216	217	214	-213	-203	-240	-192
Memorandum items:								
Tourism related services(e)	7 383	7 880	7 224	7 818	-5 714	-5 462	-5 710	-6 476

— nil or rounded to zero (including null cells)

np not available for publication but included in totals where applicable, unless otherwise indicated

(a) For sign conventions, see paragraph 11 of the Explanatory Notes.

(b) For more information see paragraphs 15 and 16 of the Explanatory Notes.

(c) Passenger transportation credits include other transportation services credits.

(d) Communications services includes other services n.i.e.

(e) For a more detailed explanation of tourism related services, see paragraphs 18 and 19 of the Explanatory Notes.

				Per cent of total merchandise exports(b)	5 MONTHS ENDED NOVEMBER		
	Sep	Oct	Nov			
	2007	2007	2007		2006	2007	
	\$m	\$m	\$m	%	\$m	\$m	
MAJOR COMMODITIES							
011	Meat of bovine animals	373	341	415	2.9	2 205	1 850
041	Wheat	218	122	106	0.7	1 475	774
268	Wool and other animal hair	202	236	257	1.8	988	993
281	Iron ore and concentrates	1 361	1 304	1 395	9.9	6 609	6 854
285	Aluminium ore and concentrates	551	506	427	3.0	2 740	2 498
321	Coal, not agglomerated	1 725	1 624	1 605	11.4	9 431	8 292
333	Crude petroleum oils	544	801	769	5.5	3 310	3 630
334	Refined petroleum oils	266	292	256	1.8	1 328	1 388
343	Natural gas	311	444	483	3.4	2 259	2 100
684	Aluminium	451	354	444	3.2	2 507	2 332
781	Passenger motor vehicles	280	301	288	2.0	1 184	1 388
971	Gold, non-monetary	791	924	1 053	7.5	4 075	4 872

SECTION AND DIVISION OF THE SITC

0	Food and live animals						
00	Live animals other than fish, crustaceans, molluscs and aquatic invertebrates	53	83	79	0.6	408	393
01	Meat and meat preparations	570	539	627	4.4	3 163	2 768
02	Dairy products and birds' eggs	214	277	269	1.9	1 048	1 111
03	Fish (not marine mammals), crustaceans, molluscs and aquatic invertebrates, and preparations thereof	114	65	61	0.4	479	448
04	Cereals and cereal preparations	320	223	193	1.4	2 138	1 314
05	Vegetables and fruit	101	84	113	0.8	642	547
06	Sugars, sugar preparations and honey	23	17	20	0.1	129	107
07	Coffee, tea, cocoa, spices, and manufactures thereof	24	20	22	0.2	100	113
08	Feeding stuff for animals (excl. unmilled cereals)	56	61	75	0.5	351	305
09	Miscellaneous edible products and preparations	40	37	41	0.3	194	193
	<i>Total Food and live animals</i>	<i>1 514</i>	<i>1 406</i>	<i>1 499</i>	<i>10.6</i>	<i>8 652</i>	<i>7 299</i>
1	Beverages and tobacco						
11	Beverages	286	277	244	1.7	1 269	1 369
12	Tobacco and tobacco manufactures	12	12	12	0.1	66	64
	<i>Total Beverages and tobacco</i>	<i>298</i>	<i>289</i>	<i>256</i>	<i>1.8</i>	<i>1 334</i>	<i>1 433</i>
2	Crude materials, inedible, except fuels						
21	Hides, skins and furskins, raw	55	63	67	0.5	285	299
22	Oil seeds and oleaginous fruits	5	17	5	—	70	62
23	Crude rubber (incl. synthetic and reclaimed)	1	—	1	—	2	3
24	Cork and wood	93	120	102	0.7	488	526
25	Pulp and waste paper	18	20	24	0.2	69	99
26	Textile fibres and their wastes (not manufactured into yarn or fabric)	270	280	291	2.1	1 499	1 248
27	Crude fertilisers (excl. those of Division 56) and crude minerals (excl. coal, petroleum and precious stones)	50	41	48	0.3	233	220
28	Metalliferous ores and metal scrap	3 009	2 778	2 929	20.8	14 550	15 030
29	Crude animal and vegetable materials, n.e.s.	16	16	15	0.1	91	83
	<i>Total Crude materials, inedible, except fuels</i>	<i>3 515</i>	<i>3 336</i>	<i>3 482</i>	<i>24.7</i>	<i>17 287</i>	<i>17 571</i>
3	Mineral fuels, lubricants and related materials						
32	Coal, coke and briquettes	1 752	1 625	1 609	11.4	9 446	8 338
33	Petroleum, petroleum products and related materials	810	1 095	1 027	7.3	4 645	5 026
34	Gas, natural and manufactured	383	577	531	3.8	2 756	2 586
	<i>Total Mineral fuels, lubricants and related materials</i>	<i>2 946</i>	<i>3 297</i>	<i>3 168</i>	<i>22.5</i>	<i>16 848</i>	<i>15 950</i>

— nil or rounded to zero (including null cells)

(b) Per cent of total merchandise is calculated for the most recent month.

(a) Some SITC sections and divisions exclude commodities subject to a confidentiality restriction. These are included in Division 98. For more information see paragraph 17 of the Explanatory Notes.

	Sep 2007	Oct 2007	Nov 2007	Per cent of total merchandise exports(b)	5 MONTHS ENDED NOVEMBER.....		
					2006	2007	
					\$m	\$m	
SECTION AND DIVISION OF THE SITC							
4	Animal and vegetable oils, fats and waxes						
41	34	28	31	0.2	94	138	
42	11	4	3	—	26	29	
43	Fats and oils (processed), waxes and inedible mixtures or preparations, of animal or vegetable origin, n.e.s.						
	6	5	5	—	27	28	
	<i>Total Animal and vegetable oils, fats and waxes</i>	51	37	39	0.3	146	195
5	Chemicals and related products, n.e.s.						
51	7	12	10	0.1	52	47	
52	64	71	53	0.4	299	332	
53	56	48	49	0.3	263	256	
54	330	343	310	2.2	1 586	1 734	
55	Essential oils and resinoids and perfume materials; toilet, polishing and cleansing preparations						
	46	49	49	0.4	213	238	
56	77	41	12	0.1	87	184	
57	33	34	37	0.3	127	166	
58	26	26	30	0.2	160	148	
59	63	78	82	0.6	334	374	
	<i>Total Chemicals and related products, n.e.s.</i>	702	702	633	4.5	3 121	3 480
6	Manufactured goods classified chiefly by material						
61	30	32	33	0.2	175	162	
62	25	19	25	0.2	87	112	
63	12	11	15	0.1	76	64	
64	Paper, paperboard, and articles of paper pulp, of paper or of paperboard						
	52	55	55	0.4	304	283	
65	35	31	36	0.3	183	180	
66	92	66	71	0.5	414	353	
67	69	136	125	0.9	405	523	
68	1 091	825	1 013	7.2	5 403	5 209	
69	100	87	85	0.6	422	452	
	<i>Total Manufactured goods classified chiefly by material</i>	1 507	1 264	1 459	10.4	7 470	7 339
7	Machinery and transport equipment						
71	117	105	103	0.7	545	522	
72	169	146	140	1.0	645	757	
73	19	19	23	0.2	72	96	
74	General industrial machinery and equipment, n.e.s. and machine parts, n.e.s.						
	160	148	129	0.9	689	736	
75	107	114	106	0.8	484	555	
76	Telecommunications and sound recording and reproducing apparatus and equipment						
	59	71	75	0.5	383	325	
77	Electrical machinery, apparatus, appliances, parts (incl. non-electrical counterparts of electrical domestic equip)						
	166	160	170	1.2	756	817	
78	379	391	394	2.8	1 591	1 919	
79	85	89	134	1.0	382	480	
	<i>Total Machinery and transport equipment</i>	1 262	1 243	1 274	9.0	5 547	6 207

— nil or rounded to zero (including null cells)

(b) Per cent of total merchandise is calculated for the most recent month.

(a) Some SITC sections and divisions exclude commodities subject to a confidentiality restriction. These are included in Division 98. For more information see paragraph 17 of the Explanatory Notes.

				Per cent of total merchandise exports(b)	5 MONTHS ENDED NOVEMBER	
Sep 2007	Oct 2007	Nov 2007	2006		2007	
\$m	\$m	\$m	%	\$m	\$m	
SECTION AND DIVISION OF THE SITC						
8	Miscellaneous manufactured articles					
81	Prefabricated buildings; sanitary, plumbing, heating and lighting fixtures and fittings, n.e.s.	14	14	12	0.1	51 70
82	Furniture, parts thereof; bedding, mattresses, mattress supports, cushions and similar stuffed furnishings	10	12	12	0.1	63 51
83	Travel goods, handbags and similar containers	3	3	3	—	13 13
84	Articles of apparel and clothing accessories	23	22	19	0.1	110 109
85	Footwear	4	4	4	—	19 21
87	Professional, scientific and controlling instruments and apparatus, n.e.s.	158	162	159	1.1	736 789
88	Photographic apparatus, equipment and supplies and optical goods, n.e.s.; watches and clocks	27	28	26	0.2	154 137
89	Miscellaneous manufactured articles, n.e.s.	211	193	212	1.5	984 1 029
	<i>Total Miscellaneous manufactured articles</i>	<i>450</i>	<i>438</i>	<i>447</i>	<i>3.2</i>	<i>2 129 2 218</i>
9	Commodities and transactions not classified elsewhere in the SITC					
93	Special transactions and commodities not classified according to kind	98	103	111	0.8	584 526
95	Gold coin whether or not legal tender, and other coin being legal tender	14	30	29	0.2	63 96
96	Coin (excl. gold coin), not being legal tender	—	—	—	—	— —
97	Gold, non-monetary (excl. gold ores and concentrates)	791	924	1 053	7.5	4 075 4 872
98	Combined confidential items excl. some of SITC 280 (exports only) and some of SITCs 510 and 520 (imports only)	574	585	638	4.5	3 900 3 396
	<i>Total Commodities and transactions not classified elsewhere in the SITC</i>	<i>1 477</i>	<i>1 642</i>	<i>1 831</i>	<i>13.0</i>	<i>8 622 8 890</i>
	Total merchandise exports	13 721	13 654	14 087	100.0	71 156 70 582
	Balance of Payments Adjustments	88	118	101	—	677 483
	Goods credits (exports) on a Balance of Payments Basis	13 809	13 772	14 188	—	71 833 71 065

— nil or rounded to zero (including null cells)

(b) Per cent of total merchandise is calculated for the most recent month.

(a) Some SITC sections and divisions exclude commodities subject to a confidentiality restriction. These are included in Division 98. For more information see paragraph 17 of the Explanatory Notes.

				Per cent of total merchandise imports(b)	5 MONTHS ENDED NOVEMBER	
	Sep	Oct	Nov		NOVEMBER	
	2007	2007	2007		2006	2007
	\$m	\$m	\$m	%	\$m	\$m
MAJOR COMMODITIES						
333 Crude petroleum oils	1 231	1 312	1 484	8.5	5 234	6 563
334 Refined petroleum oils	665	931	792	4.5	3 246	3 651
542 Medicaments	480	623	483	2.8	2 774	2 738
641 Paper and paperboard	175	191	167	1.0	916	926
752 Automatic data processing machines	533	533	573	3.3	2 721	2 789
759 Parts and accessories of office machines	173	184	166	1.0	952	892
764 Telecommunications equipment	508	635	654	3.8	2 582	2 803
781 Passenger motor vehicles	1 143	1 249	1 331	7.6	5 518	5 925
782 Motor vehicles for the transport of goods	444	464	504	2.9	1 936	2 307
784 Parts and accessories of motor vehicles	212	247	245	1.4	1 114	1 145
792 Aircraft and associated equipment	181	223	237	1.4	1 085	1 154
971 Gold, non-monetary	433	558	515	3.0	2 135	2 958

SECTION AND DIVISION OF THE SITC

0	Food and live animals					
00	Live animals other than fish, crustaceans, molluscs and aquatic invertebrates	1	3	9	0.1	47 26
01	Meat and meat preparations	28	30	40	0.2	157 158
02	Dairy products and birds' eggs	37	40	55	0.3	187 202
03	Fish (not marine mammals), crustaceans, molluscs and aquatic invertebrates, and preparations thereof	117	105	99	0.6	508 499
04	Cereals and cereal preparations	54	58	56	0.3	252 283
05	Vegetables and fruit	110	135	137	0.8	556 625
06	Sugars, sugar preparations and honey	22	25	19	0.1	91 105
07	Coffee, tea, cocoa, spices, and manufactures thereof	83	82	84	0.5	378 430
08	Feeding stuff for animals (excl. unmilled cereals)	37	38	45	0.3	183 206
09	Miscellaneous edible products and preparations	118	107	155	0.9	538 619
	<i>Total food and live animals</i>	608	623	699	4.0	2 896 3 153
1	Beverages and tobacco					
11	Beverages	107	147	139	0.8	541 608
12	Tobacco and tobacco manufactures	16	13	19	0.1	85 83
	<i>Total beverages and tobacco</i>	123	160	158	0.9	626 691
2	Crude materials, inedible, except fuels					
21	Hides, skins and furskins, raw	—	—	—	—	1 1
22	Oil seeds and oleaginous fruits	2	2	3	—	16 16
23	Crude rubber (incl. synthetic and reclaimed)	12	15	14	0.1	82 70
24	Cork and wood	49	65	54	0.3	235 272
25	Pulp and waste paper	31	30	18	0.1	114 126
26	Textile fibres and their wastes (not manufactured into yarn or fabric)	11	14	13	0.1	67 63
27	Crude fertilisers (excl. those of Division 56) and crude minerals (excl. coal, petroleum and precious stones)	13	20	17	0.1	67 89
28	Metalliferous ores and metal scrap	54	93	25	0.1	298 288
29	Crude animal and vegetable materials, n.e.s.	22	28	26	0.1	120 117
	<i>Total crude materials, inedible, except fuels</i>	195	268	169	1.0	1 001 1 042
3	Mineral fuels, lubricants and related materials					
32	Coal, coke and briquettes	1	1	4	—	10 8
33	Petroleum, petroleum products and related materials	1 940	2 282	2 327	13.4	8 640 10 408
34	Gas, natural and manufactured	101	46	53	0.3	440 401
	<i>Total mineral fuels, lubricants and related materials</i>	2 042	2 329	2 385	13.7	9 090 10 818

— nil or rounded to zero (including null cells)

(b) Per cent of total merchandise imports is calculated for the most recent month.

(a) Some SITC sections and divisions exclude commodities subject to a confidentiality restriction. These are included in Division 98. For more information see paragraph 17 of the Explanatory Notes.

	Sep 2007	Oct 2007	Nov 2007	Per cent of total merchandise imports(b)	5 MONTHS ENDED NOVEMBER	
					
					2006	2007
	\$m	\$m	\$m	%	\$m	\$m
SECTION AND DIVISION OF THE SITC						
4	Animal and vegetable oils, fats and waxes					
41	1	5	2	—	10	13
42	33	39	46	0.3	190	202
43	4	5	6	—	25	27
	<i>Total animal and vegetable oils, fats and waxes</i>					
	38	50	54	0.3	226	242
5	Chemicals and related products, n.e.s.					
51	318	276	215	1.2	1 402	1 421
52	79	112	104	0.6	476	481
53	53	57	59	0.3	264	272
54	571	787	589	3.4	3 286	3 362
55	Essential oils and resinoids and perfume materials; toilet, polishing and cleansing preparations					
	159	156	148	0.8	710	734
56	Fertilisers (excl. crude)					
	52	65	48	0.3	205	289
57	Plastics in primary forms					
	150	162	161	0.9	682	764
58	Plastics in non-primary forms					
	109	118	123	0.7	551	563
59	Chemical materials and products, n.e.s.					
	135	157	157	0.9	748	755
	<i>Total chemicals and related products, n.e.s.</i>					
	1 624	1 891	1 604	9.2	8 323	8 641
6	Manufactured goods classified chiefly by material					
61	Leather, leather manufactures, and dressed furskins, n.e.s.					
	15	16	19	0.1	59	78
62	Rubber manufactures, n.e.s.					
	188	209	223	1.3	1 045	1 044
63	Cork and wood manufactures (excl. furniture)					
	48	57	55	0.3	257	265
64	Paper, paperboard, and articles of paper pulp, of paper or of paperboard					
	233	261	229	1.3	1 190	1 233
65	Textile yarn, fabrics, made-up articles n.e.s. and related products					
	216	229	238	1.4	1 096	1 104
66	Non-metallic mineral manufactures, n.e.s.					
	199	233	225	1.3	1 006	1 052
67	Iron and steel					
	259	287	310	1.8	1 507	1 510
68	Non-ferrous metals					
	121	250	180	1.0	704	809
69	Manufactures of metals, n.e.s.					
	376	414	448	2.6	1 962	2 092
	<i>Total manufactured goods classified chiefly by material</i>					
	1 654	1 957	1 927	11.1	8 826	9 187
7	Machinery and transport equipment					
71	Power generating machinery and equipment					
	318	311	422	2.4	1 675	1 850
72	Machinery specialised for particular industries					
	707	612	642	3.7	2 885	3 202
73	Metal working machinery					
	69	72	75	0.4	302	341
74	General industrial machinery and equipment, n.e.s. and machine parts, n.e.s.					
	828	850	919	5.3	4 309	4 177
75	Office machines and automatic data processing machines					
	763	773	802	4.6	3 968	3 966
76	Telecommunications and sound recording and reproducing apparatus and equipment					
	939	1 184	1 243	7.1	4 613	5 044
77	Electrical machinery, apparatus, appliances, parts (incl. non-electrical counterparts of electrical domestic equipment)					
	752	792	806	4.6	3 771	3 916
78	Road vehicles (incl. air-cushion vehicles)					
	1 991	2 202	2 339	13.4	9 445	10 415
79	Transport equipment (excl. road vehicles)					
	293	336	332	1.9	1 467	1 609
	<i>Total machinery and transport equipment</i>					
	6 660	7 132	7 580	43.5	32 435	34 520

— nil or rounded to zero (including null cells)

(b) Per cent of total merchandise imports is calculated for the most recent month.

(a) Some SITC sections and divisions exclude commodities subject to a confidentiality restriction. These are included in Division 98. For more information see paragraph 17 of the Explanatory Notes.

				Per cent of total merchandise imports(b)	5 MONTHS ENDED NOVEMBER	
	Sep	Oct	Nov		NOVEMBER	
	2007	2007	2007		2006	2007
	\$m	\$m	\$m	%	\$m	\$m
SECTION AND DIVISION OF THE SITC						
8	Miscellaneous manufactured articles					
81	Prefabricated buildings; sanitary, plumbing, heating and lighting fixtures and fittings, n.e.s.					
	66	67	65	0.4	289	311
82	Furniture, parts thereof; bedding, mattresses, mattress supports, cushions and similar stuffed furnishings					
	218	249	255	1.5	1 075	1 156
83	Travel goods, handbags and similar containers					
	57	72	72	0.4	292	323
84	Articles of apparel and clothing accessories					
	382	405	364	2.1	1 952	1 978
85	Footwear					
	98	99	99	0.6	542	529
87	Professional, scientific and controlling instruments and apparatus, n.e.s.					
	340	371	359	2.1	1 755	1 791
88	Photographic apparatus, equipment and supplies and optical goods, n.e.s.; watches and clocks					
	112	128	127	0.7	606	600
89	Miscellaneous manufactured articles, n.e.s.					
	860	961	936	5.4	4 333	4 293
	<i>Total miscellaneous manufactured articles</i>					
	2 133	2 353	2 278	13.1	10 846	10 983
9	Commodities and transactions not classified elsewhere in the SITC					
93	Special transactions and commodities not classified according to kind					
	3	3	8	—	16	20
95	Gold coin whether or not legal tender, and other coin being legal tender					
	—	—	2	—	1	2
96	Coin (excl. gold coin), not being legal tender					
	—	—	—	—	—	—
97	Gold, non-monetary (excl. gold ores and concentrates)					
	433	558	515	3.0	2 135	2 958
98	Combined confidential items excl. some of SITC 280 (exports only) and some of SITCs 510 and 520 (imports only)					
	45	61	49	0.3	68	224
	<i>Total commodities and transactions not classified elsewhere in the SITC</i>					
	482	622	574	3.3	2 219	3 205
	Total merchandise imports					
	15 559	17 383	17 428	100.0	76 487	82 482
	Balance of Payments Adjustment					
	248	342	269	..	1 297	1 332
	Goods Debits (imports) on a Balance of Payments Basis					
	15 807	17 725	17 697	..	77 784	83 814

.. not applicable

— nil or rounded to zero (including null cells)

(a) Some SITC sections and divisions exclude commodities subject to a confidentiality restriction. These are included in Division 98. For more information see paragraph 17 of the Explanatory Notes.

(b) Per cent of total merchandise imports is calculated for the most recent month.

	EXPORTS				IMPORTS				BALANCE OF MERCHANDISE TRADE	
	2006-07	November 2007	5 months ended November 2006	5 months ended November 2007	2006-07	November 2007	5 months ended November 2006	5 months ended November 2007	2006-07	5 months ended November 2007
	\$m	\$m	\$m	\$m	\$m	\$m	\$m	\$m		
Belgium	1 322	171	468	628	1 607	152	676	675	-285	-47
Brazil	853	84	392	411	859	87	376	428	-6	-16
Canada	1 768	134	735	705	2 077	205	906	905	-309	-200
China	22 805	2 073	9 127	9 614	27 140	3 069	12 105	13 675	-4 335	-4 061
Denmark	189	14	88	70	1 138	73	491	352	-949	-282
Egypt(b)	337	8	109	102	17	2	8	9	320	94
Fiji	383	36	185	164	148	11	78	55	235	110
Finland	1 593	26	578	441	848	78	339	369	745	73
France	1 364	89	555	647	3 910	420	1 528	2 029	-2 546	-1 382
Germany	1 444	126	583	601	9 274	1 018	3 887	4 379	-7 830	-3 777
Hong Kong (Sar of China)	3 038	250	1 305	1 124	1 419	127	676	656	1 619	468
India	10 103	559	4 275	3 431	1 314	136	571	697	8 789	2 734
Indonesia	4 241	250	1 980	1 615	4 647	274	1 522	1 928	-405	-312
Iran	208	5	78	67	41	2	19	14	167	53
Iraq	96	1	94	6	36	—	20	—	61	6
Ireland	209	11	76	93	2 120	191	857	844	-1 911	-750
Israel	188	16	86	75	640	51	259	244	-451	-169
Italy	1 742	120	819	632	4 869	439	2 038	2 006	-3 127	-1 375
Japan	32 623	2 545	14 027	13 208	17 400	1 799	7 435	7 743	15 224	5 465
Korea, Republic of	13 086	1 326	5 418	5 751	6 014	565	2 700	2 640	7 071	3 112
Kuwait	493	41	220	266	231	1	91	118	262	149
Malaysia	3 103	269	1 276	1 301	6 602	622	2 540	3 248	-3 500	-1 947
Mexico	837	42	404	235	1 102	113	481	500	-266	-265
Netherlands	2 976	259	1 224	1 085	1 494	134	636	587	1 482	498
New Zealand	9 435	880	4 216	4 242	5 615	631	2 385	2 854	3 820	1 388
Pakistan	321	24	146	249	151	12	61	59	170	190
Papua New Guinea	1 524	100	578	750	2 215	328	882	1 220	-692	-470
Philippines	1 056	54	483	501	753	74	323	365	303	136
Saudi Arabia	2 025	156	882	846	949	128	380	429	1 076	417
Singapore	4 637	372	2 140	1 640	10 126	971	4 166	4 468	-5 489	-2 828
South Africa	2 320	201	937	1 121	1 402	150	660	626	918	495
Spain	1 254	97	631	397	1 625	169	617	741	-371	-344
Sweden	351	31	194	186	2 287	225	960	980	-1 936	-794
Switzerland	1 130	12	200	702	1 916	189	850	902	-786	-200
Taiwan	6 189	403	2 606	2 334	4 409	362	1 875	1 867	1 780	467
Thailand	4 256	296	1 676	1 803	7 222	811	2 907	3 515	-2 966	-1 712
Turkey	527	29	155	243	437	30	195	152	90	91
United Arab Emirates	2 393	161	778	1 434	1 747	206	780	1 082	646	352
United Kingdom	6 146	1 064	2 795	3 651	7 407	501	3 104	3 805	-1 261	-154
United States of America	9 803	939	4 261	4 242	24 908	1 883	10 552	9 680	-15 105	-5 437
Viet Nam	1 629	129	889	481	4 504	493	2 280	2 083	-2 874	-1 602
Other Countries	8 105	685	3 487	3 482	8 186	697	3 272	3 555	-81	-73
Total	168 100	14 087	71 156	70 582	180 804	17 428	76 487	82 482	-12 704	-11 900
APEC	121 022	10 139	51 546	49 947	128 461	12 563	54 719	58 435	-7 439	-8 488
ASEAN	19 051	1 379	8 500	7 405	34 968	3 377	14 276	16 132	-15 917	-8 728
Developing Countries	87 414	6 975	36 677	35 682	84 723	8 538	36 074	40 159	2 691	-4 477
Least Developed Countries	1 567	109	696	624	246	27	107	111	1 320	514
European Union(c)	19 147	2 058	8 220	8 683	39 018	3 640	16 141	17 873	-19 871	-9 190
OECD	88 263	7 958	37 648	37 974	99 398	9 145	41 990	43 691	-11 135	-5 716

— nil or rounded to zero (including null cells)

(a) See Time series spreadsheets for details of all countries.

(b) Exports of Alumina to Egypt are excluded from country total and included in the 'Other Countries' category.

(c) The European Union includes 27 member countries.

	2006-07	November 2007	5 MONTHS ENDED NOVEMBER	
			2006	2007
			\$m	\$m
EXPONENTS (a)				
New South Wales	28 062	2 350	11 853	12 032
Victoria	20 049	1 707	8 788	8 587
Queensland	35 437	2 685	15 541	13 666
South Australia	9 016	787	3 669	4 194
Western Australia	60 513	5 264	24 843	25 810
Tasmania	3 713	239	1 451	1 453
Northern Territory	4 013	427	1 849	1 628
Australian Capital Territory	8	—	6	4
State not available for publication(b)	809	58	337	332
Re-exports	6 479	570	2 819	2 877
Total exports	168 100	14 087	71 156	70 582
IMPORTS				
New South Wales	69 792	6 766	29 993	31 984
Victoria	51 324	4 847	21 949	22 923
Queensland	27 201	2 797	11 601	12 891
South Australia	6 584	652	2 718	2 947
Western Australia	22 125	2 163	8 775	10 569
Tasmania	614	46	302	280
Northern Territory	2 846	158	1 149	884
Australian Capital Territory	317	—	2	3
Total imports	180 804	17 428	76 487	82 482

— nil or rounded to zero (including null cells)

(a) State in which the final stage of production or manufacture occurs.

(b) Exports of Alumina to Bahrain, Egypt and Iceland are excluded from the state totals and included in 'State not available for publication category'.

PERIOD AVERAGE EXCHANGE RATES(a): Per Australian dollar

<i>Period</i>	<i>United States dollar</i>	<i>UK pound sterling</i>	<i>Euro</i>	<i>Japanese yen</i>	<i>Trade-weighted index of value of the A\$(b)</i>
FINANCIAL YEAR					
2004-05	0.7529	0.4052	0.5918	80.45	62.7
2005-06	0.7474	0.4205	0.6143	85.90	63.3
2006-07	0.7863	0.4066	0.6018	93.21	64.8
MONTHS					
2006					
September	0.7566	0.4009	0.5938	88.58	63.2
October	0.7539	0.4021	0.5975	89.46	63.2
November	0.7721	0.4040	0.5995	90.52	64.0
December	0.7861	0.4002	0.5949	92.05	64.4
2007					
January	0.7839	0.4002	0.6027	94.28	64.7
February	0.7823	0.3993	0.5981	94.29	64.4
March	0.7919	0.4067	0.5980	92.90	64.8
April	0.8263	0.4156	0.6117	98.17	67.1
May	0.8252	0.4157	0.6103	99.58	67.0
June	0.8423	0.4238	0.6274	103.34	68.5
July	0.8675	0.4266	0.6325	105.47	69.7
August	0.8282	0.4123	0.6083	96.63	66.8
September	0.8464	0.4196	0.6088	97.34	67.7
October	0.8984	0.4397	0.6316	104.04	71.0
November	0.8987	0.4335	0.6121	99.88	70.0

- (a) These exchange rates and the trade-weighted index are derived using rates provided by the Reserve Bank of Australia in respect of each trading day.
- (b) May 1970 = 100. The Trade-weighted index is reweighted annually on 1 October and on special occasions as required.

EXPLANATORY NOTES

INTRODUCTION

1 This publication presents preliminary estimates of Australia's international trade in goods and services on a balance of payments basis and merchandise import and export statistics on a recorded trade basis.

2 Merchandise trade statistics on a recorded trade basis are compiled from information submitted by exporters and importers or their agents to the Australian Customs Service (ACS). Adjustments for coverage, timing and valuation are made to recorded trade data to convert them to a balance of payments basis. The main source for services data is the quarterly Survey of International Trade in Services.

3 More comprehensive quarterly estimates of Australia's trade in goods and services, together with comprehensive details of Australia's balance of payments are included in the quarterly publication, *Balance of Payments and International Investment Position, Australia* (cat. no. 5302.0). Detailed monthly statistics on merchandise trade are available on Time Series Spreadsheets or by subscription to tailored services.

CONCEPTS, SOURCES AND METHODS

4 The conceptual framework used in compiling Australia's merchandise trade statistics can be found in *International Merchandise Trade, Australia: Concepts, Sources and Methods, 2001* (cat. no. 5489.0).

5 The conceptual framework used in compiling Australia's balance of payments statistics is based on the Fifth Edition of the International Monetary Fund's *Balance of Payments Manual* (BPM5,1993). Descriptions of the underlying concepts and structure of the balance of payments and the sources, methods and terms used in compiling the estimates are presented in *Balance of Payments and International Investment Position, Australia: Concepts, Sources and Methods, 1998* (cat. no. 5331.0). To bring merchandise trade statistics on a recorded trade basis to a balance of payments basis, timing adjustments are made to ensure that the transaction is recorded in the period in which ownership changed, rather than in the period in which the transaction was recorded by ACS. Adjustments are also made to account for the change of ownership of goods not included in merchandise trade statistics. Chapter 6 of cat. no. 5331.0 provides more detail on the relationship between statistics on international merchandise trade on a recorded trade basis and on a balance of payments basis.

6 Both of the Concepts, Sources and Methods publications are available to download for free from the ABS website. Select *Methods, Classifications, Concepts & Standards*, then choose *ABS concepts, classifications and statistical standards* and then the catalogue numbers as above.

SEASONAL ADJUSTMENT

7 The estimates of international trade in goods and services on a balance of payments basis are seasonally adjusted, however the merchandise exports and imports statistics on a recorded trade basis are not. Monthly original estimates are volatile, being subject to calendar-related and large irregular influences. Seasonally adjusted estimates are derived by estimating and removing from the original series systematic calendar related effects, such as seasonal, trading day, length of month and moving holiday influences. Seasonal adjustment does not aim to remove the irregular or non-seasonal influences which may be present in any particular month. These irregular influences may reflect both random economic events and difficulties of statistical recording.

8 The seasonally adjusted statistics in this publication use the concurrent seasonal adjustment technique and Autoregressive Integrated Moving Average (ARIMA) Modelling to estimate factors for the current and previous months. Under concurrent seasonal adjustment, the estimates of seasonal factors are fine tuned as new original estimates become available each period. The seasonally adjusted estimates are subject to revisions at each reference month as the estimates of seasonal factors are improved. For more information on seasonal adjustment methods, see *Information Paper: An Introductory Course on Time Series Analysis, Jan 2005* (cat. no. 1346.0.55.001), *Time Series Analysis*

EXPLANATORY NOTES *continued*

SEASONAL ADJUSTMENT

continued

Frequently Asked Questions, 2003 (cat. no. 1346.0.55.002), alternatively contact the Assistant Director, Time Series Analysis on (02) 6252 6345 or e-mail <time.series.analysis@abs.gov.au>.

ARIMA MODELLING

9 ARIMA modelling relies on the characteristics of the series being analysed to project future period data. ARIMA modelling is used on a case-by-case basis where it results in reduced revisions to seasonally adjusted series when subsequent data become available. The projected values are temporary, intermediate values, that are only used internally to improve the estimation of the seasonal factors. The projected data do not affect the original estimates and are discarded at the end of the seasonal adjustment process. The ARIMA model is assessed as part of the annual reanalysis and, following the 2007 annual re-analysis, 89% of trade in goods and services time series use an ARIMA model. For more information on the details of ARIMA modelling see *Feature article: Use of ARIMA modelling to reduce revisions* in the October 2004 issue of *Australian Economic Indicators* (cat. no. 1350.0).

TREND ESTIMATES

10 The month-to-month movements of the seasonally adjusted estimates may not be reliable indicators of trend behaviour because they include irregular or non-seasonal movements. Trend estimates are derived by applying a 13-term Henderson moving average to the seasonally adjusted series. The use of a 13-term Henderson average can result in revisions to the estimates for the most recent six months as additional observations become available. Revisions can also occur because of changes in the original data and as a result of the re-estimation of the seasonal factors. For more information on trend estimates methods, see *Information Paper: A Guide to Interpreting Time Series - Monitoring Trends* (cat. no. 1349.0), alternatively contact the Assistant Director, Time Series Analysis on (02) 6252 6345 or e-mail <time.series.analysis@abs.gov.au>.

SIGN CONVENTION

11 In keeping with balance of payments conventions, where statistics are on a balance of payments basis, credit entries (exports) are shown without sign and debit items (imports) are shown as negative entries. For statistics on a recorded trade basis, both imports and exports are shown without sign. The calculation of percentage changes on balance of payments debit items are made without regard to sign. References to balance of payments debit items in Key Figures, Key Points, and Analysis and Comments are also made without regard to sign.

COMMODITY BREAKDOWNS OF GOODS

12 For details of the classification used for goods exports on a balance of payments basis (credits), see table 6.6 in *Balance of Payments and International Investment Position, Australia: Concepts, Sources and Methods, 1998* (cat. no. 5331.0).

13 Details of the classification of goods imports on a balance of payments basis (debits) are provided in table 6.7 in cat. no. 5331.0.

14 The recorded trade statistics shown in tables 12 and 13 are classified by the Standard International Trade Classification (SITC). The first section of tables 12 and 13 show the most significant commodities (by value) at the SITC 3 digit level. Imports and exports of goods at a more detailed level are available from the Time Series spreadsheets.

COMMODITY BREAKDOWNS OF SERVICES

15 The quarterly detailed services data published in table 11 are consistent with the monthly aggregates shown in table 9.

16 Monthly indicators for many of the services components that are only surveyed quarterly are not available. In particular, the Freight and Other transportation components of Total services credits are not available for publication on a monthly basis. The estimates for these items shown in table 9 are therefore derived by dividing the quarterly estimate by three. Where quarterly survey data are not available, freight debits

EXPLANATORY NOTES *continued*

COMMODITY BREAKDOWNS OF SERVICES *continued*

are derived directly from imports data for the reference month as a difference between total merchandise cost, insurance and freight (CIF) and free on board (FOB), adjusted to reflect timing and processing adjustments. For freight credits and other transportation credits and debits, estimates are derived by extrapolating the last month's data by an average of movements for the same month over the three previous years.

CONFIDENTIALITY OF MERCHANDISE TRADE STATISTICS

17 The release of statistics for certain merchandise trade commodities is restricted in order to prevent the identification of the activities of an individual business, where this is requested by the business concerned. These restrictions do not affect the total value of exports and imports, but they can affect statistics at the country, state and commodity levels. For information on the confidentiality restrictions applied to the merchandise trade statistics in this publication, refer to the current *International merchandise trade: Confidential Commodities List (CCL)* (cat. no. 5372.0.55.001) which can be accessed from ABS web site.

TOURISM RELATED SERVICES

18 The tourism related services memorandum items provide timely indicators of the movements in tourism related activities, not an absolute measure of the level of these activities. These series are not compiled on a balance of payments conceptual basis. However, they do provide a reasonable approximation of world tourism related activities.

19 The memorandum items have been derived by re-aggregating relevant components of the international trade in services series of the balance of payments accounts. The tourism related indicator has been derived by combining total travel services (business, education-related and other personal travel), passenger fares, and the air transport component of other transportation services which relates to agency fees and commission receipts.

SERVICES BY STATE AND BY PARTNER COUNTRY

20 Annual services data by state and by partner country are released twice yearly. Calendar year data are usually released with the March issue of this publication and financial year data are released with the September issue. Refer to Time series data for details.

21 Services credits are classified by the state of provision, while services debits are classified by the state of consumption. The state allocations for transportation, travel and communication services are based on a number of indicators including merchandise trade statistics by state, overseas passenger arrivals and departures by state of clearance and data provided by the Department of Education, Science and Training. The allocation for other services (about 25% of all trade in services) is primarily based on the location of the business reporting the information, which serves as a proxy for the state of provision/consumption of that service. The data should be used with care but are considered suitable for analysis over time.

22 A comprehensive explanation of the data sources used and the methodology applied in the compilation of partner country statistics is provided in Chapter 17 of *Balance of Payments and International Investment Position, Australia - Concepts, Sources and Methods* (cat. no. 5331.0). Approximately 7% of total services credits and 5% of total services debits for 2006–07 are either confidential, or unable to be allocated to individual countries.

ABS DATA AVAILABLE

23 More detailed balance of payments and recorded merchandise trade data, including forward seasonal factors are available as time series spreadsheets or data cubes from the ABS website.

24 More detailed merchandise trade data by commodity, country and state, and statistics included in this and related publications are available on request. Inquiries should be made to the National Information and Referral Service as shown on the back of this publication.

EXPLANATORY NOTES *continued*

RELATED PRODUCTS AND PUBLICATIONS

25 Users may also wish to refer to the following publications which can be downloaded free of charge from the ABS web site:

- *Balance of Payments and International Investment Position, Australia* (cat. no. 5302.0) – issued quarterly
- *International Merchandise Imports, Australia* (cat. no. 5439.0) – issued monthly
- *International Trade Price Indexes, Australia* (cat. no. 6457.0) – issued quarterly
- *Balance of Payments and International Investment Position, Australia: Concepts, Sources and Methods* (cat. no. 5331.0)
- *Information Paper: Quality of Australian Balance of Payments Statistics* (cat. no. 5342.0)
- *International Merchandise Trade, Australia: Concepts, Sources and Methods* (cat. no. 5489.0)
- *A Guide to Australian Balance of Payments and International Investment Position Statistics* (cat. no. 5362.0.55.001).

26 Current publications produced by the ABS are listed in the Catalogue of Publications and Products (cat. no. 1101.0). The Catalogue is available from any ABS office or from this site. The ABS also issues a daily Release Advice on the web site which details products to be released in the week ahead.

CAUTIONARY NOTE

27 The tables in this publication are presented on two bases. Tables 1–11 contain estimates of Australia's international trade in goods and services which have been adjusted for coverage, valuation and timing to a balance of payments basis. Tables 12–15 contain estimates of merchandise exports and imports based on Australian Customs Service records. Paragraph 5 of the Explanatory Notes provides an explanation of the difference between these bases.

ROUNDING

28 Where figures have been rounded, discrepancies may occur between sums of the component items and totals. Percentage movements are calculated from data at the level of precision presented in this publication (i.e. \$m) except for international merchandise trade tables.

APPENDIX RELATED ARTICLES

<i>Article</i>	<i>Source(a)</i>	<i>Issue</i>
Investment		
Foreign ownership of equity	5302.0	Sep qtr 2007
Kangaroo bonds	5302.0	Sep qtr 2004
Gross external debt	5302.0	Sep qtr 2003
Measuring Australia's foreign currency exposure	5302.0	Dec qtr 2001
Balance of payments		
International comparison of balance of payments statistics	(b) 5363.0	1999–2000
The Sydney Olympic Games Update	5368.0	Jul 2000
The Sydney Olympic Games	5302.0	Sep qtr 1999
Merchandise trade		
Number and characteristics of Australian exporters	5368.0.55.006	2006–2007
New methodology for deriving counts of Australian exports	5368.0	Feb 2006
Export and Import Invoice Currencies, 2005	5368.0	Jun 2005
Australia's Importers, 2003–04	5368.0	Nov 2004
Australia's Exporters, 2003–04	5368.0	Oct 2004
Australia's Trade with the USA	5368.0	Mar 2004
Trade through Australia's ports	5422.0	Sep qtr 2002
Australia's trade in wine	5422.0	Dec qtr 2001
Australia's export markets, 1991–92 to 2000–01	5422.0	Jun qtr 2001
Major commodities traded by Australia, 1991 to 2000	(b) 5422.0	Dec qtr 2000
Australia's trade in crude petroleum	5422.0	Mar qtr 2000
Australia's merchandise trade with the Republic of Korea	5422.0	Sep qtr 1999
Australia's merchandise trade with Japan	5422.0	Mar qtr 1999
Bilateral merchandise trade statistics reconciliation: Australia and the European Union, 1992 to 1997	5422.0	Sep qtr 1998
Trade in services		
International trade in services by partner country, 2006, preliminary	5368.0	Dec 2006
Changes to International Trade in Services Statistics, August 2006	5368.0	Aug 2006
Changes to International trade in services travel statistics	5368.0	Aug 2005
International trade in education services	5302.0	Sep 2001
Finance		
Impact of 2003–2004 farm season on Australian production	1350.0	Oct 2003
Recent trends in construction and first home buyers finance	5609.0	Mar 2002
Household sector data in the financial accounts	5232.0	Mar qtr 2002
Investment Managers	5655.0	Jun qtr 2000
Venture capital, 1999–2000	5611.0	2000–01
Technical information		
Changes to international trade statistics July 2008	5368.0.55.009	Nov 2007
Changes on 1 January 2007 to Statistical Codes in the AHECC and the Customs Tariff	1233.0.55.001	Nov 2006
ABS implementation in January 2007 of revisions to international trade classifications, 2007	5368.0.55.005	June 2006
Revised Treatment of Goods for Processing in Merchandise Trade and Balance of Payments Statistics	5368.0	May 2006
Impact of Customs and ABS changes on import statistics from October 2005	5439.0	Oct 2005
ABS Management of the Impact of the Implementation of the Imports Component of the New Customs System	5439.0	Aug 2005
Changes to country and port classifications	5368.0	May 2003
Implementation of New Customs Systems	5368.0	Aug 2004
The effect of customs changes on export statistics	5422.0	Jun qtr 2002
Harmonized system changes	5422.0	Sep qtr 2001
International trade review: data quality and client queries	5422.0	Jun qtr 2000
Data confidentiality	5422.0	Dec qtr 1999

(a) In the ABS web site home page, select Key Products; Papers & Articles; ABS Articles; Feature Articles by Catalogue Number.

(b) This article can be found in pdf format by referring to the Details page of the specified issue of this publication on the ABS web site and click on Download Now.

FOR MORE INFORMATION . . .

INTERNET **www.abs.gov.au** the ABS website is the best place for data from our publications and information about the ABS.

LIBRARY A range of ABS publications are available from public and tertiary libraries Australia wide. Contact your nearest library to determine whether it has the ABS statistics you require, or visit our website for a list of libraries.

INFORMATION AND REFERRAL SERVICE

Our consultants can help you access the full range of information published by the ABS that is available free of charge from our website, or purchase a hard copy publication. Information tailored to your needs can also be requested as a 'user pays' service. Specialists are on hand to help you with analytical or methodological advice.

PHONE 1300 135 070
EMAIL client.services@abs.gov.au
FAX 1300 135 211
POST Client Services, ABS, GPO Box 796, Sydney NSW 2001

FREE ACCESS TO STATISTICS

All statistics on the ABS website can be downloaded free of charge.

WEB ADDRESS www.abs.gov.au



2536800011079

ISSN 1328 2778

RRP \$26.00